

The background of the cover features a close-up, high-contrast photograph of two black Dynaudio speakers. The top speaker is partially visible, showing its tweeter and four mounting screws. The bottom speaker is more prominent, showing its larger driver and the same four screws. A large, solid brown geometric shape, resembling a stylized 'Z' or a series of connected triangles, is overlaid on the right side of the image, extending from the top speaker down towards the bottom speaker.

# DYNAUDIO

2023

Product Catalogue



# DYNAUDIO

DYNAUDIO MALAYSIA - Car Audio

**YUPITERU TECHNOLOGY (M) SDN BHD**

📍 Unit 26-1, Oval Damansara, No. 685 Jalan  
Damansara, TTDI 60000 Kuala Lumpur.

☎ +603-2300 0721

📞 +6017-8525 672  
(Whatsapps for Message Enquiry Only)





About 40 years ago, in the small town of Skanderborg, Denmark, a group of engineers with a shared passion for music reached a conclusion: even the best speakers at the time could not faithfully reproduce music without coloration. In order to change this situation, they established a new company: Dynaudio.

Building upon their meticulous research and breakthrough developments, Dynaudio's team of engineers ambitiously set out to create a new generation of speakers. Their efforts led to revolutionary technological advancements that still form the foundation of Dynaudio's exceptional speaker performance today. These technological innovations, such as Dynaudio's Directivity Control technology (DOC), have made Dynaudio speakers the reference standard for sound quality across the industry. Over the years, many Dynaudio speaker models have become classics in the hearts of music enthusiasts—a true legend among speakers for genuine music lovers.

Professional recording engineers also started to take notice of Dynaudio. In the challenging recording and monitoring environments of recording studios, the unparalleled music reproduction qualities of Dynaudio speakers—transparent, clear, detailed, and with uncompromised dynamic range—proved to be invaluable. As a result, Dynaudio speakers received unanimous praise from numerous recording engineers in the world's most famous recording studios. The demanding British Broadcasting Corporation (BBC Radio & Music) chose Dynaudio as the reference monitoring speaker for all of their modern recording studios and broadcasting rooms.

The recordings of many world-renowned artists and remarkable film productions rely on Dynaudio speakers. It is highly likely that a significant portion of the CDs and DVDs you own were recorded, monitored, or produced using Dynaudio speakers.

Nowadays, as our time spent at home decreases and our time on the road increases, high-quality music reproduction in the automotive industry is receiving greater attention. This trend started in 1997 when the Volvo C70 was equipped with the extraordinary Dynaudio sound system, which was the world's first system to feature Dolby Pro Logic. Currently, multiple models from Volvo and Volkswagen can be equipped with factory-installed premium Dynaudio car audio systems.

The birth of Dynaudio multimedia speakers allows you to enjoy clear sound with advanced Dynaudio technology in your office, creative work, gaming, and portable audio devices. The professional expertise and historical legacy possessed by Dynaudio are also reflected in their range of home speakers. Each Dynaudio speaker model encompasses meticulous craftsmanship, innovative technology, and unparalleled sound quality—everything stemming from a love for music.

**All There Is  
Unadulterated Sound  
As if Being There Live**



# ESOTAR<sup>2</sup>series.

Dynaudio has introduced the aftermarket automotive benchmark flagship series called Esotar2 series. At the core of Dynaudio's reliable performance lies the high-quality driver units. The company has developed these driver units specifically for high-end products, optimizing them for Dynaudio's home systems, professional series, and automotive speaker product lines.





## Esotar<sup>2</sup> 110 Tweeter

Size : 4"  
Impedance : 6Ω  
Rated Power : 150W  
Mounting depth : 27mm  
Weight : 0.5kg  
Frequency Range : 2000-30000Hz

*Dynaudio produces the finest Esotar series high-frequency driver units, incorporating their most refined technology into the new flagship automotive tweeter units and bestowing them with the name Esotar.*



## Esotar<sup>2</sup> 430 Midwoofer

Size : 4"  
Impedance : 4Ω  
Rated Power : 150W  
Mounting depth : 42mm  
Weight : 0.47kg  
Frequency Range : 200-7000Hz

*The new Esotar<sup>2</sup> 430 midrange driver unit is equipped with a geometrically optimized 3.5" diameter MSP (Magnesium Silicate Polymer) diaphragm. The MSP material combines stiffness, low weight, and excellent inner damping, offering superior performance.*



## Esotar<sup>2</sup> 650 Woofer

Size : 6.5"  
Impedance : 4Ω  
Rated Power : 200W  
Mounting depth : 67mm  
Weight : 1.25kg  
Frequency Range : 50-4000Hz

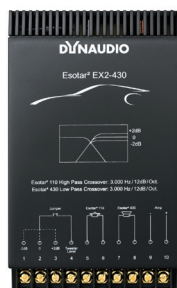
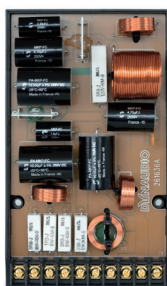
*The Esotar<sup>2</sup> 650 mid/bass driver with a diameter of 17cm relies on a rigid die-cast solid aluminum frame and is equipped with Dynaudio's characteristic MSP (magnesium silicate polymer) diaphragm.*



## Esotar<sup>2</sup> 1200 Subwoofer

Size : 12"  
Impedance : 4Ω  
Rated Power : 400W  
Mounting depth : 143mm  
Weight : 8.8kg  
Frequency Range : 18-300Hz

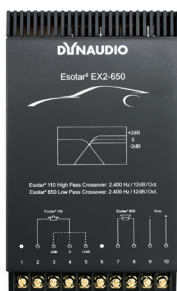
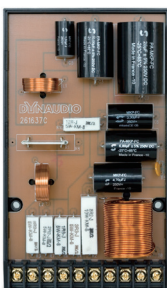
*The Esotar<sup>2</sup> 1200 subwoofer features a unique construction: a massive dual-stacked magnet system powers a large 75mm diameter aluminum voice coil and MSP cone diaphragm.*



## Esotar<sup>2</sup> EX2-430 Crossover

Impedance : 4Ω  
 Weight : 0.5kg  
 Crossover Frequency : 3000Hz  
 Size : 43x 102x 173mm

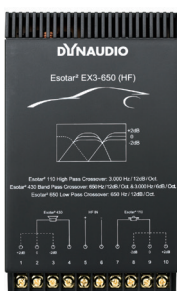
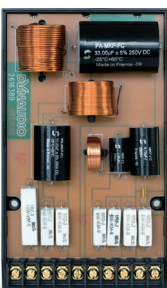
*The Esotar<sup>2</sup> EX2-430 is an audiophile quality two-way passive crossover set designed for the integration of a reference automotive stereo system comprising a pair each of the Dynaudio Esotar<sup>2</sup> 110 tweeters and Esotar<sup>2</sup> 430 midrange unit.*



## Esotar<sup>2</sup> EX2-650 Crossover

Impedance : 4Ω  
 Weight : 0.5kg  
 Crossover Frequency : 2400Hz  
 Size : 43x 102x 173mm

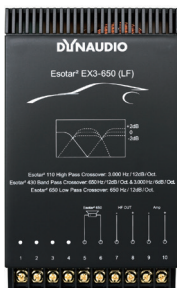
*The Esotar<sup>2</sup> EX2-650 is an audiophile quality two-way passive crossover set. It is designed for the integration of a reference automotive stereo system comprising a pair each of the Esotar<sup>2</sup> 110 tweeters and Esotar<sup>2</sup> 650 woofers.*



## Esotar<sup>2</sup> EX3-650(HF/LF) Crossover

Impedance : 4Ω  
 Weight : 0.5kg  
 Crossover Frequency : 650Hz/3000Hz  
 Size : 43x 102x 173mm

*The Esotar<sup>2</sup> EX3-650 is an audiophile quality three-way passive crossover designed for the integration of a reference automotive three-way system comprised of an Esotar<sup>2</sup> 110 tweeters, Esotar<sup>2</sup> 430 midrange and Esotar<sup>2</sup> 650 woofers.*







# ESOTEC series.

The Esotec Autosound range embodies all the advantages of Dynaudio's long tradition of high-performance loudspeaker design: advanced Dynaudio technology, carefully selected components, specially matched materials and premium sound.



## Esotec System 242 Two-way Component System

Impedance : 4Ω  
Sensitivity : 90dB  
Rated Power : 100W  
Frequency Range : 55Hz-25kHz



The Esotec System 242 is a two-way component systems comprising one pair each of MW 162 woofers, MD 102 tweeters and X 252 crossover along with all mounting hardware and grilles. The Dynaudio Esotec component set is designed to facilitate the synergistic effects of performance-optimized systems, delivering exceptional sound quality and flexibility for use in various applications and vehicles.

## Esotec System 342 Three-way Component System

Impedance : 4Ω  
Sensitivity : 91dB  
Rated Power : 200W  
Frequency Range : 55Hz-25kHz



The Esotec System 342 three-way component systems includes one pair each of the MD 102 soft dome tweeters, MD 142 soft dome midrange, MW 162 mid/woofers and X 362 audiophile quality, competition-grade, adjustable passive crossover networks into an ultra-high performance package.

## Esotec System 362 Three-way Component System

Impedance : 4Ω  
Sensitivity : 92dB  
Rated Power : 200W  
Frequency Range : 40Hz-25kHz



The Esotec System 362 component systems combine one pair each of the MD 102 soft dome tweeters, MD 142 soft dome midrange, MW 172 woofers, and the X 362 crossover networks into an incredibly refined and ultimately powerful three-way component system. All mounting hardware and grilles are included.

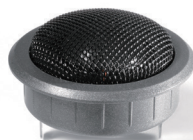
## Esotec Speaker Grille

Each driver unit can be individually equipped with the original Dynaudio protective grille.



## Esotec MD 102 Soft Dome Tweeter

Size : 2.5"  
Impedance : 8Ω  
Rated Power : 100W  
Mounting Depth : 29.1mm  
Weight : 0.126kg  
Frequency Range : 2200-30kHz



Esotec MD 102 the soft dome tweeter features a special coating on its surface, which extends the distortion-free high-frequency response.

## Esotec MD 142 Soft Dome Midrange Unit

Size : 4"  
Impedance : 8Ω  
Rated Power : 100W  
Mounting Depth : 37.5mm  
Weight : 0.75kg  
Frequency Range : 700-6000Hz



Esotec MD 142 the soft dome midrange driver, with a diameter of 75mm (4 inches), is equipped with a large-diameter aluminum voice coil and features a magnet at its center. It is housed in a relatively compact and shallow enclosure, allowing for efficient installation and integration into various speaker systems.

## ESOTEC series



### Esotec MW 162 Mid-bass Unit

Size : 6.5"  
Impedance : 4Ω  
Rated Power : 120W  
Mounting Depth : 67mm  
Weight : 1.2kg  
Frequency Range : 40-4000Hz

*Esotec MW 162 is a 17 cm (6.5 inch) mid-bass unit that offers clear and precise midrange performance as well as powerful low-frequency response.*

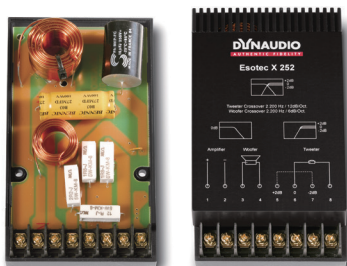


### Esotec MW 172 Mid-bass Unit

Size : 8"  
Impedance : 4Ω  
Rated Power : 150W  
Mounting Depth : 77.9mm  
Weight : 1.6kg  
Frequency Range : 35-3500Hz

*Esotec MW 172 is an 20 cm (8 inch) mid-bass unit designed for high-performance two-way and three-way systems.*

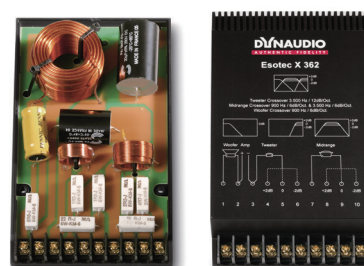
### Esotec X252 Two-way Crossover (MW 152, MW 162/GT, MW 172)



Size : 38 x 84 x 145mm  
Impedance : 4Ω  
Rated Power : 100W, 120W, 150W  
Weight : 0.33kg  
Frequency Range : 2200Hz

*X252 crossover is part of a two-way component system that includes three speaker units and features a high-frequency level control for fine-tuning the high-frequency performance. Through collaboration with the automotive industry to provide advanced audio systems, Dynaudio has gained extensive experience in designing the new Esotec speaker system, resulting in improvements in sound quality in four areas. The Esotec X252 crossover incorporates impedance compensation in a first-order crossover for the low-frequency unit, reducing the load on the amplifier, and utilizes second-order filters with full reset circuit protection for the high-frequency tweeter.*

### Esotec X362 Three-way Crossover (MW 162/GT, MW 172, MW 182)



Size : 43 x 104 x 175mm  
Impedance : 4Ω  
Rated Power : 200W  
Weight : 0.60kg  
Frequency Range : 900Hz/3.5kHz

*Esotec crossovers feature gold-plated screw terminals, polypropylene capacitors, and thick copper traces on a printed circuit board housed in a shock-resistant plastic enclosure. Each crossover is optimally designed based on specific configurations to maximize the performance of Esotec speakers while addressing a wide range of system and application requirements, enabling optimized phase response and time coherence in any vehicle. The new Esotec X362 crossover is a three-way competition-grade, high-quality passive crossover that is designed to be compatible with four new Esotec low-frequency woofer (MW 162, MW 172, and MW 182 models), as well as the Esotec MD 102 high-frequency tweeter and Esotec MD 142 soft dome midrange unit.*



A man with a beard and mustache is wearing large black headphones and a black baseball cap with "REPUBLIC DUTY" written on it. He is making a rock hand gesture (the "devil horns" sign) with his right hand. He is wearing a blue textured sweater and a lanyard with a "SONTRONICS" tag. A NAMM conference badge is hanging from his neck. He is standing in front of a keyboard. In the background, there is a microphone on a stand and a wall with the word "DYNAUDIO" partially visible. The ceiling has track lighting. To the left, there is a rack of audio equipment with various cables and a "ANG:fabrik" label.

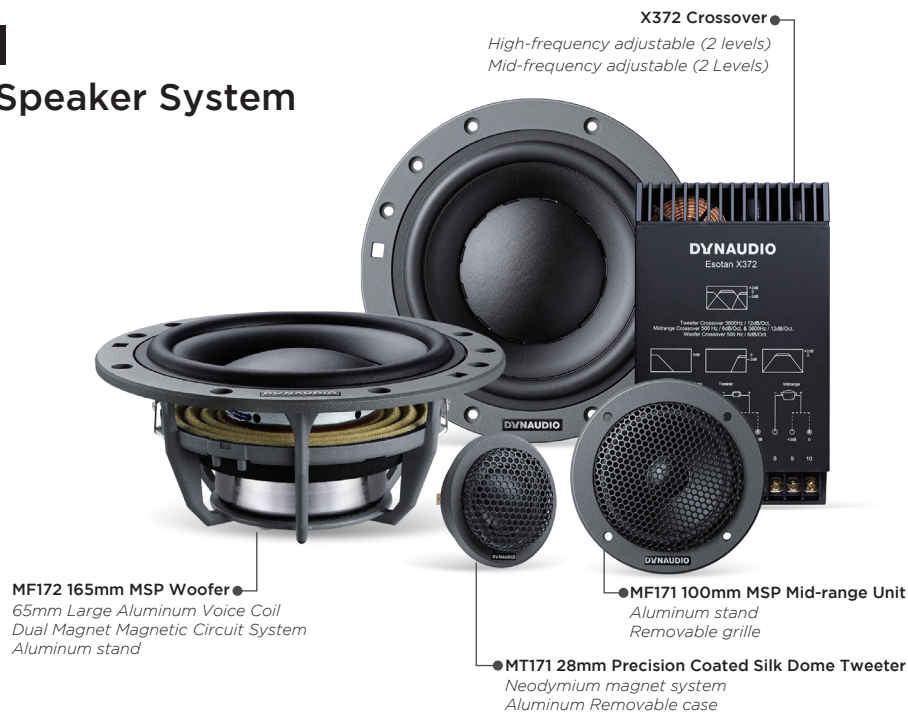
# ESOTAN series.

Redefining the standards of high-end speakers and ushering in a new era of listening artistry. The all-new Dynaudio ESOTAN series presents the latest interpretation of the "Pure Sound" design philosophy, showcasing a sleek and elegant appearance and delivering pristine, noble sound. Combining Dynaudio's latest acoustic principles with impeccable craftsmanship, the audio system has been meticulously optimized and upgraded to provide users with an authentic and natural music experience.



## Esotan 372 MKII Three-way Component Speaker System

Size : 165mm/6.5"  
 Mounting Depth : 67mm/2.4"  
 Frequency Response : 50Hz-20kHz  
 Adjustable Tweeter Range : 0, -2dB  
 Adjustable Mid-range: 0, +2dB  
 Power (rated/max) : 150W/400W  
 Sensitivity (2V/1m) : 86dB  
 Impedance : 4Ω  
 Aluminum Tweeter Housing  
 Aluminum Mid-range Stand  
 Aluminum Woofer Stand  
 Included Installation Accessories



## Esotan 272 MKII Two-way Component Speaker System

Size : 165mm/6.5"  
 Mounting Depth : 67mm/2.4"  
 Frequency Response : 50Hz-20kHz  
 Adjustable Tweeter Range : 0, -2dB, 0, +2dB  
 Power (rated/max) : 150W/400W  
 Sensitivity (2V/1m) : 86dB  
 Impedance : 4Ω  
 Aluminum Tweeter Housing  
 Aluminum Woofer Stand  
 Included Installation Accessories



## Esotan 236 MKII Two-way Component Speaker System

Size : 165mm/6.5"  
Mounting Depth : 67mm/2.4"  
Frequency Response : 60Hz-20kHz  
Adjustable Tweeter Range : 0, -2dB, 0, +2dB  
Power (rated/max) : 80W/160W  
Sensitivity (2V/1m) : 89dB  
Impedance : 4Ω

40th Anniversary Special Edition

High sensitivity, can be driven directly by the head unit.

Aluminum Woofer Stand

Included Installation Accessories



## Esotan 232 MKII Two-way Component Speaker System

Size : 165mm/6.5"  
Mounting Depth : 67mm/2.4"  
Frequency Response : 60Hz-20kHz  
Adjustable Tweeter Range : 0, -2dB, 0, +2dB  
Power (rated/max) : 60W/120W  
Sensitivity (2V/1m) : 86dB  
Impedance : 4Ω

Aluminum Woofer Stand

Included Installation Accessories



## Tweeters/Midrange

	MT 131	MT 171	MF 171
Nominal Impedance	4 Ω	4 Ω	4 Ω
Recommended Freq. Range	1300-20000Hz	1300-20000Hz	160-15000Hz
Power Handling *Nominal long term IEC *Transient	70 W 700W	100 W 1000 W	150 W 1000W
Net Weight	0.126kg	0.126kg	0.50kg
Overall Dimensions (ΦXD)	62x41.2 mm	62x41.2 mm	101x59.2 mm



MT 131



MT 171



MF 171

## Woofers

	MF 132	MF 172
Nominal Impedance	4 Ω	4 Ω
Recommended Freq. Range	45-5000Hz	40-4000Hz
Power Handling *Nominal long term IEC *Transient	70 W 700W	120 W 1000 W
Net Weight	1.1kg	1.2kg
Overall Dimensions (ΦXD)	172x77 mm	172x77 mm



MF 132

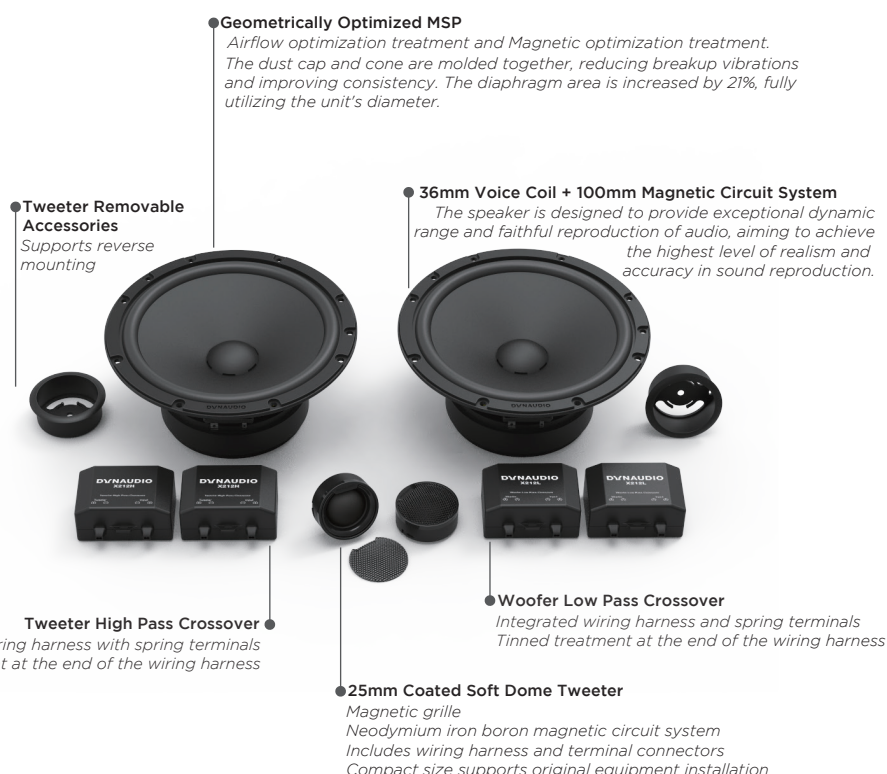


MF 172



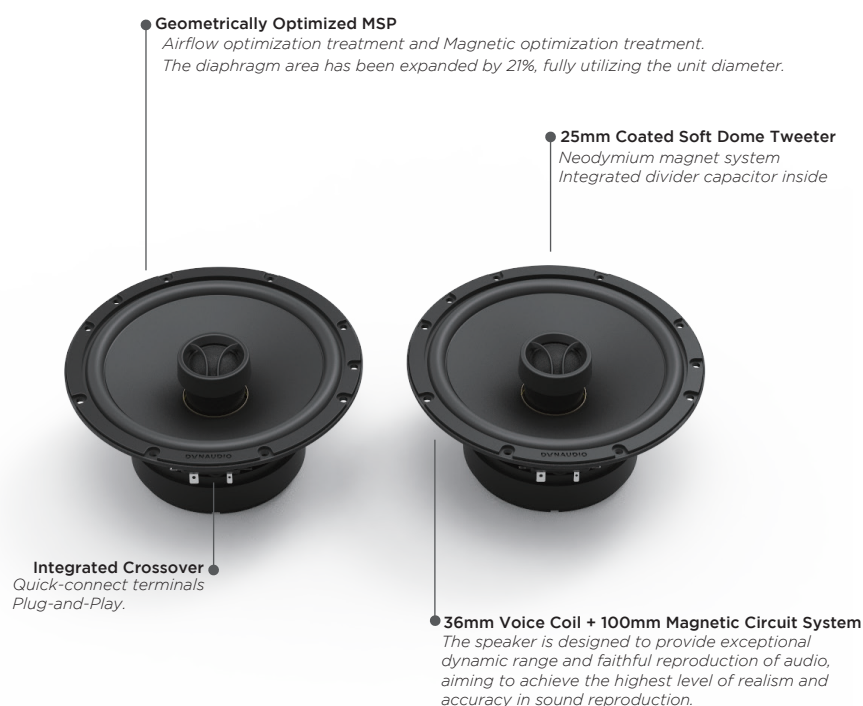
## Esotan 212 Two-way Component Speaker System

Size : 165mm/6.5"  
Frequency Response : 65Hz-20kHz  
Power (RMS/Max) : 80W/160W  
Sensitivity (2.83V/1m) : 91dB  
Impedance : 4Ω



## Esotan 212C Two-way Coaxial Speaker System

Size : 165mm/6.5"  
Frequency Response : 65Hz-20kHz  
Power (RMS/Max) : 80W/160W  
Sensitivity (2.83V/1m) : 91dB  
Impedance : 4Ω







**SUPRAX series.**  
Dynaudio Special Custom Audio



SURPAX V17

Volkswagen series



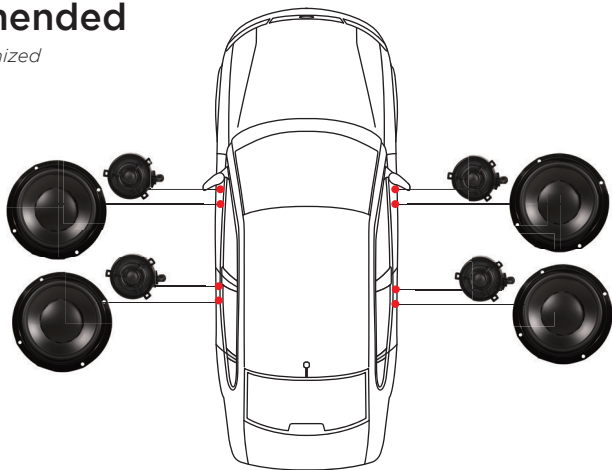
SURPAX V17

Volkswagen Surpax V170 6.5 / Volkswagen Surpax V200 7.5

In 2013, Volkswagen introduced the original equipment manufacturer (OEM) Surpax V170 6.5 Package and Surpax V200 7.5 Package to the aftermarket for the first time. These packages are specifically designed for Volkswagen models such as Tiguan L, Touareg, and new Passat, offering a pure and immersive audio experience that replicates a live performance. The high-frequency unit features a fabric diaphragm and is filled with ferrofluid-cooled neodymium material. It is designed with a narrow magnetic gap and a large diameter magnet, providing enhanced control and higher sensitivity. The mid-low frequency unit utilizes an MSP (Magnesium Silicate Polymer) composite diaphragm, offering excellent performance. The specially designed small-diameter voice coil in an external magnetic field makes it easier to drive the speaker unit.

Official Audio Upgrade Recommended

Pairing mid-bass speakers with high-frequency tweeters for optimized complementarity greatly enhances performance.



	Tweeter T81882	Tweeter T81883	Mid-Woofer T84903	Mid-Woofer T85773
Impedance	4Ω	4Ω	4Ω	4Ω
Rated Power	120W	120W	150W	150W
Maximum Power	240W	240W	300W	300W



# SURPAX M17

## Mercedes Benz series

(Suitable for new Mercedes-Benz C/GLC/E/S)



- . High-strength aluminum protective grille
- . Dynaudio new generation small voice coil design
- . Dynaudio unique integrated MSP cone



- . Perfectly integrated installation structure with the original car
- . Universal soldering tab design, compatible with dedicated harnesses for seamless plug-and-play installation in the original car. It can also be directly connected to aftermarket amplifiers without any loss of quality
- . Airflow buffering material filling



- . Dynaudio unique integrated MSP cone
- . Aluminum voice coil, efficient heat dissipation and lightweight vibration system
- . Perfectly matched installation structure for the original car



- . High-strength aluminum protective cover
- . High-performance neodymium magnet
- . Universal solder lug design, compatible with dedicated wiring harness for seamless integration with the original vehicle connections, and can also be directly connected to aftermarket amplifiers



- . Dynaudio silk dome diaphragm
- . Dynaudio new generation small voice coil design
- . Magnetic fluid cooling damping material filling



- . Perfectly integrated installation structure with the original car
- . Ultra-narrow magnetic gap & large-diameter magnet design for enhanced control and increased sensitivity.
- . Universal solder lug design, compatible with dedicated wiring harness for seamless integration with the original vehicle connections, and can also be directly connected to aftermarket amplifiers



- . Stainless steel midrange grille
- . Acoustic optimization vents
- . Perfectly adapted installation structure for the original car
- . Acoustic optimized dust cover

## Surpax M17F Tweeter + midrange

The Surpax M17F kit includes two tweeters, two midrange units and two midrange grilles. The tweeter uses a fabric diaphragm and is filled with magnetic fluid cooling and damping materials. The ultra-narrow magnetic gap & large-diameter magnet design make it have stronger control and higher sensitivity.



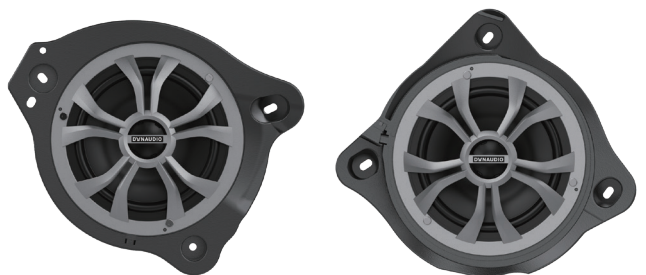
## Surpax M17B Midrange

The Surpax M17B kit includes two midrange units and two midrange grilles. The midrange unit adopts Dynaudio's unique integrated MSP cone, high-performance neodymium magnet, aluminum voice coil, and high-strength aluminum basin frame to provide stable support for the lightweight vibration system and output smooth and delicate Dynaudio original sound. The holes of the mid-range grille have been precisely designed for acoustic optimization to minimize the impact on the sound, and the shape perfectly fits the car interior, improving the quality of the car interior.



## Surpax M17S Bass

The Surpax M17S kit includes two woofers. The woofer adopts Dynaudio's unique one-piece MSP cone, and cooperates with the rear cavity structure module optimized for the model to provide a powerful and powerful bass.



# SURPAX M17

Mercedes Benz series

(Suitable for new Mercedes-Benz C/GLC/E/S)



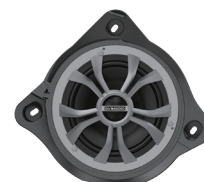
**Tweeter  
ST171**



**Mid-Woofer  
SM170**



**Subwoofer  
SW171**



**Subwoofer  
SW172**

Impedance	4Ω	4Ω	8Ω	8Ω
Frequency Response	800-20kHz	60-16kHz	40-5kHz	40-5kHz
Rated Power	40W	40W	50W	50W
Max Power	80W	80W	100W	100W
Sensitivity	88dB	88dB	90dB	90dB
Recommended Crossover frequency	4kHz	350Hz/4kHz(M17F) 350Hz(M17B)	350Hz	350Hz

## Dynaudio special custom audio configuration diagram

### . Smart Edition

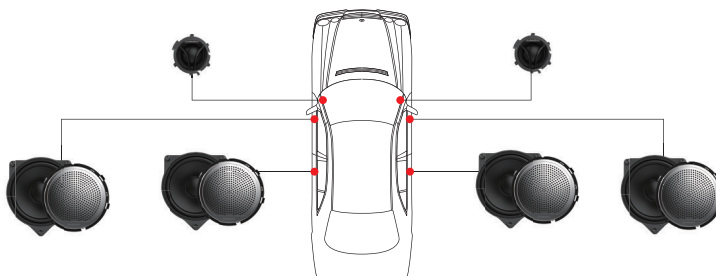
**Surpax M17B + Surpax M17F**

*Front Door :*

*Tweeter, midrange, a pair of midrange grille*

*Back Door :*

*Midrange, a pair of midrange grills.*



### . Premium Edition

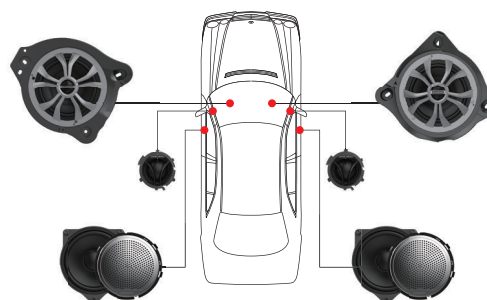
**Surpax M17F + Surpax M17S**

*Front Door :*

*Tweeter, midrange, a pair of midrange grille*

*Driver's seat :*

*Bass*



### . Flagship Edition

**Surpax M17B + Surpax M17F + Surpax M17S**

*Front Door :*

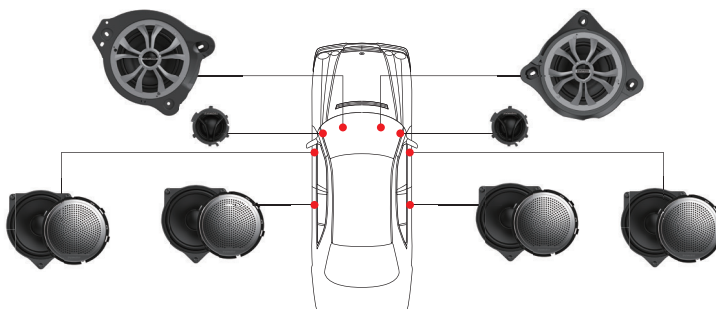
*Tweeter, midrange, a pair of midrange grille*

*Back Door :*

*Midrange, a pair of midrange grills.*

*Driver's seat :*

*Bass*







**DYNAUDIO**





# ESOSUB 9 series.

Dynaudio Shallow-Mount Subwoofer



# ESOSUB 9 series

## 9” Shallow-Mount Subwoofer Unit



### Esosub 9S 9” Shallow-Mount Subwoofer Unit

The Dynaudio Esosub 9S subwoofer embodies the exquisite craftsmanship and outstanding technology of Dynaudio speaker design. With its Shallow-Mount design and aluminum alloy basket, it provides a stable and flexible installation option. The diaphragm utilizes Dynaudio's unique one-piece MSP (Magnesium Silicate Polymer) composite cone, and it is paired with a 75mm large voice coil and a neodymium/iron-ferrite composite magnetic circuit system, delivering accurate and powerful low-frequency performance and Hi-Fi-level distortion control.

Sensitivity (2.83V/1m)	86.7dB	Sd	240cm2
Rated Power RMS	100W	Vas	26.01L
Instantaneous Peak Power	200W	BL	9.167Tm
Impedance	4Ω	Frequency Range	25-800Hz
Fs	33.5Hz	Linear Excursion	7.5mm
Qes	0.565	Voice Coil Diameter	75mm
Qms	6.148	Mounting Depth	85mm
Qts	0.592	Weight	2.2Kg





## ESOSUB 9 series

### Shallow-Mount Pre-Loaded Enclosure Subwoofer



## Esosub B9S

### Shallow-Mount Pre-Loaded Enclosure Subwoofer

The Dynaudio Esosub B9S is a Shallow-Mount Pre-Loaded Enclosure subwoofer that features a built-in Dynaudio 9-inch car subwoofer unit, specifically designed for in-car applications. The subwoofer is housed in a compact and sturdy enclosure, inheriting materials and construction techniques from Dynaudio's professional studio monitors. It supports horizontal installation, allowing for reduced space occupation in the trunk. The sealed enclosure design enables precise reproduction of low-frequency details, while its excellent power handling capability provides greater flexibility for tuning and adjustments.

Sensitivity (2.83V/1m)	86.3dB
Rated Power RMS	150W
Instantaneous Peak Power	300W
Impedance	4Ω
Fs	57.4Hz
Frequency Range	50-800Hz
Dimension (L x W x H)	412x322x196mm
Weight	8.5Kg

